



February 2018



## Welcome to the February Castle Transformation Newsletter

This month, we feature:

- Lace Unravelling events round-up
- Object of the Month - Fire bell from the Ducal Palace
- Supporting Centenary Cities
- Jade's Column – Light Night
- Caves Festival update
- A Face From The Past - A talk with Scott Lomax
- Robin Hood Pageant



MA / PGDip / PGCert  
Museum and Heritage Development



## Project update – February 2018

Welcome to our February newsletter

**Viewfinder: send us your images** - You may remember that some months back we introduced the Viewfinder project to newsletter readers and put out a call for images of the Castle in the local press. On the left is one of the pics we used for the original appeal.

Well, with the much anticipated launch of our new website (watch this space) we will also be breathing new life into this project, providing a space for online submission of photographs and anecdotes, as well as a platform for storing and displaying these images in a digital archive.

More details will follow soon, but in the meantime if you have any interesting or special photos or memories of visits to the Castle, why not dust them off and consider sending them in?

This project aims to capture local people's experiences of the Castle and celebrate its recent history as well as its more notorious past.

**Student Study Day** - At the beginning of the month, the project team gave presentations at a study day for students on the Museum and Heritage Development course at Nottingham Trent University.

Being such a large and unique heritage project, we were able to give valuable insight into all aspects of project development and explore the complexities of working on a historic site.

**Light Night** - Of course we couldn't put out a February edition of the newsletter without mentioning the fabulous Light Night which took place throughout the city on Friday 23 February.

Special mention must go to the artists and performers who staged fantastic installations and entertainment in the Castle Grounds and also at Brewhouse Yard.

Despite the cold weather everyone seemed to be having a great time, thanks in most part to the hard working staff and volunteers who make such events possible. Our Project Assistant Jade writes below in more detail about what happened on the night!

[Back to top](#)



**Lace Unravelled  
Symposium  
Thursday 15 –  
Friday 16 March**

The Lace Unravelled  
Symposium reflects on

the multiple perspectives of lace as a product, an industry, and an inspiration for contemporary creativity.

It brings together curators, lace industry experts, academics and artists from the UK, France and Australia to share knowledge about lace and lace making, within the historical context of lace making in Nottingham.

Delegates will have the opportunity to engage in an exciting programme of talks, demonstrations, artists' projects and tours of Nottingham City Museums and Galleries' world-class lace and lace machinery collections.

This two-day event takes place at the following venues:

**Wollaton Hall:** a masterpiece of Elizabethan architecture and home to Nottingham Industrial Museum

**Newstead Abbey:** the ancestral home of the poet Lord Byron, which also houses the Costume, Textiles and Lace collection.

**Nottingham Castle:** will host an evening reception that will introduce delegates to plans for the Castle's new permanent exhibition about Nottingham Lace

**Bonington Gallery:** Nottingham Trent University - On the eve of the Symposium (Wednesday 14 March, 5pm – 7pm), delegates are invited to the launch of the Lace Unarchived exhibition.

[Read about the full programme](#)

There is a two-day ticket or they can be purchased for either day. Once purchased, this ticket will admit you to the Lace Unravelled Symposia. This ticket also admits you to the drinks and canapés reception at Nottingham Castle Museum and Art Gallery, on the evening of Thursday 15 March.

[Buy your tickets](#)

Lace Unravelled has been made possible thanks to Arts Council England's Designation Development Fund and The Grand Tour.

[Back to Top](#)

---



## Lace Unravelled Public Programme Saturday 10 March – Sunday 22 April 2018

Lace Unravelled extends beyond the Symposium, with a programme of events to share the project with the public. The Lace Unveiled exhibition will continue at Newstead Abbey until 22 April and Lace Unarchived will show at Bonington Gallery until 29 March.

In addition, designer and historian Chris Matthews will lead Lace Unravelled walks, taking participants to sites including Nottingham's Lace Market, Canning Circus and The Park.

The walks, which he has devised specially for the project, take place on Saturday 16 and Sunday 17 March and [tickets are available on Eventbrite for £5.00.](#)

Chris has also produced a 'lace walk' map of Nottingham to accompany his walks, which is available free during the Symposium and from locations around the Lace Market for the duration of the Lace Unravelled programme. The map invites visitors to navigate their own 'lace walk' around the City.

The public programme also includes an opportunity to view Carol Quarini's work in the picturesque Prospect Room at Wollaton Hall on 17 and 18 March, and attend one of a series of behind the scenes tours to visit the Lace, Costume and Textiles collection at Newstead Abbey and the Lace Archive at Nottingham Trent University. [Book a space on Eventbrite](#)

(This image is [Carol Quarini's](#) Battle of Britain Lace which will be on show at Wollaton Hall)

[Back to Top](#)



## Lace Unravelled: The Roadshow Returns – Lace is a family business!

**Tonya Outtram - Project Assistant, Lace Unravelled** tells the story of the recent roadshow event...

Our second roadshow took place on 3 February at Broadway Cinema.

As before, tables were filled with objects from the collection, including bobbins, carriages, and various lace panels. Pictures of mystery objects were laid out, photos and

information displayed. This time, the lace bunting was real! It was a kind loan from friend of the project, Jane Bealby (you might have heard her on BBC Radio Nottingham talking about her father's lace firm, J.B. Walker and Co Ltd).

Peter Mee also joined us for the day, a (now retired) twisthand, who worked in Leavers and curtain lace, and later taught at Nottingham Art College (pictured). It was a real privilege to have his company.

A couple from Fewkes brought a lovely sample book to show Curator, Judith Edgar. Fewkes Ltd made Schiffli embroidered lace - the lace used on Princess Diana's and the Duchess of York's

wedding dresses -and was based in Mapperley until its closure in recent years.

Meanwhile, Ann Inscker (Curator) and I were looking at a lace menu that had been brought in to show us, when one of our visitors calmly pointed out that the person named on the accompanying card was her uncle! Talking to so many people who remember their relatives being in the lace industry really brings home how enormous the lace industry here in Nottingham used to be, and what a family affair it really was.

Thank you to everyone who attended the event, also to those who generously donated or shared objects with us. Here's to the Lace Makers of Nottingham – hope to see you at our Lace Unravalled Symposium in March!"

[Back to Top](#)

---

## Object of the Month

**What is it?** - Our selected object is a fire bell said to be from the Ducal Palace at Nottingham Castle.

**Why is it significant?** - A fire bell was shown on the model of the Duke of Newcastle's palace made for the 1832 hearing of his compensation claim after the palace was set alight during the Reform Bill Riots of 1831.

**Tell me more** - The bronze fire bell is attributed to Nottingham bell founder William Noone who worked at the Oldfield Bell Foundry and began casting bells in his own right in 1678. His work is found in churches across Nottinghamshire including St Leonard's Church at Wollaton. The bell he cast for All Saints' Church at Wragby gave rise to the quip "no-one cast these bells."

The bell foundry trade was present in Nottingham from Medieval times with Mellors, Oldfield and Hedderley being the most well-known businesses. Oldfield's Bell Foundry was in Foundry Yard in Narrow Marsh, other foundries were based around Low Pavement.

**In our opinion** - "The bell offers material evidence of one of the most dramatic episodes in the history of the Castle. The fact that it was never rung before the fire nor presented in evidence after the fire only makes its silent testimony more compelling". **Dr Richard A Gaunt, Curator of Rebellion.**

The fire bell will feature in the new Rebellion Gallery currently being designed by exhibition designers Casson Mann.

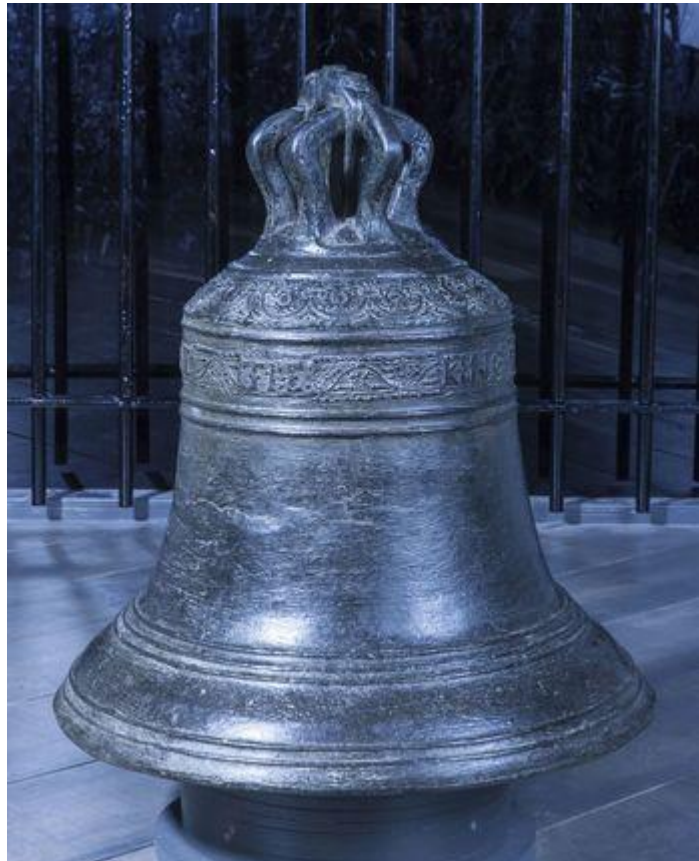
[Read more about the bell founders](#)

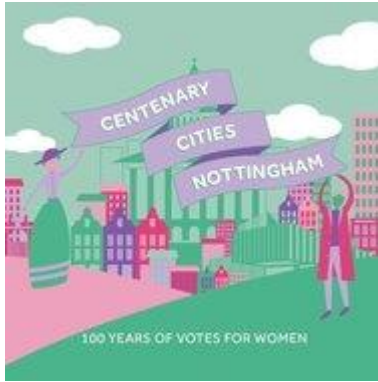
[Read more about Hollowstone](#)

[Read more about Narrow Marsh](#)

[Back to top](#)

---





## Supporting Centenary Cities Nottingham!

Celebrating 100 years of votes for women

Following the burning of the Castle in 1831 by Reform Bill Rioters, the campaign for universal suffrage continued. We are celebrating one of those key milestones.

On 6 February 1918 the UK Parliament passed the '[Representation of the People Act](#)', which granted voting rights to (some) British women for the first time.

This marked a turning point in British history. Women had previously been prevented from participating in democracy in any meaningful way – the complexities of politics were either considered irrelevant to women or beyond their comprehension, so decision making was limited to the realm of men. Hard to believe, right?

Of course, many women of the time also objected to this blatant discrimination and committed their lives to the fight for electoral equality. It is these women that Centenary Cities Nottingham intends to celebrate, one hundred years since their efforts first bore fruit.

To find out more about Nottingham's campaign, read Val Wood's '[Why We Exist](#)'

[Back to top](#)



### Jade's Column - Light Night 2018

Our project apprentice, Jade Everatt took a trip round the Castle Quarter this Light Night...

"On Friday, my family and I wrapped up warm and braved the cold winter weather to explore the city for Nottingham Light Night 2018.

Of course our first stop was the Castle where a long line of people were waiting for the gates to open.

Outside of the Castle, next to the Robin Hood Statue, Nottinghamshire Wildlife Trust had a brilliantly colourful light sign which said #KEEPITWILD and were holding a silent disco which proved to be quite popular along with a few professionals dancing and doing tricks with light sticks - very mesmerising to watch.

In the Castle grounds, the first thing we came across was physics tricks with light, followed by the Highwood projection on the band stand, then The Nottingham Girls High school who had turned tin cans in to pretty lanterns.

They had created patterns in the tin cans by cutting out holes, they then put a candle in the middle for the light to seep out, the cans had handles on for people to carry around just like lanterns.

This was proving very popular with both children and adults, many were commenting on how it was a great way of recycling. My little cousin loved carrying hers around so much that when the candle went out she simply replaced it with a glow stick – great initiative from a 10 year old there!

I also enjoyed seeing the candlelit light installation by the Nottingham Peace Builders, just as beautiful as when it was in The Market Square for the Diwali celebrations.

We made our way up to the Castle Green to watch a light sabre battle and interact with 'The Circled Square' before heading down to Brewhouse Yard to grab some old fashioned sweeties and get warm by the fire."

If you have any pictures from Light Night then please share them with us

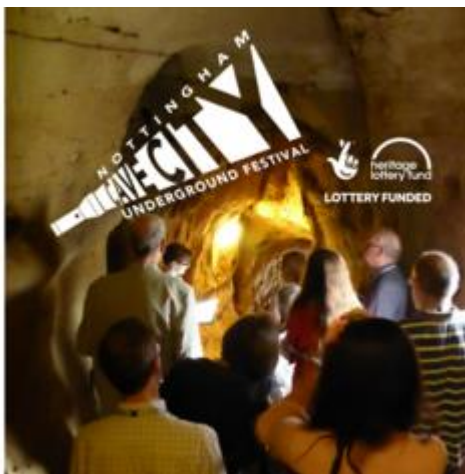
at [NottinghamCastleProject@nottinghamcity.gov.uk](mailto:NottinghamCastleProject@nottinghamcity.gov.uk)

Some of Jade's pictures from the night are below. [You can see more of Jade's pictures on our Twitter feed](#)

[Back to top](#)



Jade's pictures from Light Night



## Caves Festival - Update

Between 11-13 May the **Nottingham Cave City Underground Festival** will promote the unique man-made features of the city's past.

The City Council, working with partners across the city will be putting on special events to celebrate Nottingham's caves.

**Scott Lomax**, City Archaeologist, gives us some insight...

"With the start of 2018 there have been a number of new caves discovered in the city, with four more recorded in the City Council's database. New information is also being researched regarding the uses of caves in the city,

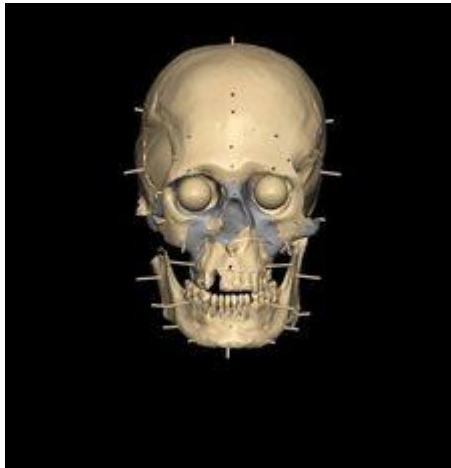
including those at the Castle.

Over the past few months I have been working to open up a number of caves not currently accessible to the public, to provide exciting new tours.

We are also looking at imaginative uses of caves, with activities aimed at a wide range of people with different interests."

More details will be revealed in the coming weeks. If you know of a venue housing a cave that might be part of the festival, please email the project team at [NottinghamCastleProject@nottinghamcity.gov.uk](mailto:NottinghamCastleProject@nottinghamcity.gov.uk)

[Back to Top](#)



## **A Face from the Past - a talk with Scott Lomax (3 March)**

Saturday 3 March 2018  
Nottingham Castle  
10.30am or 1.30pm  
Ticket includes entry to Nottingham Castle museum and grounds  
£8 adults, £6 children

Have you ever wanted to come face-to-face with someone who lived in Nottingham 600 years ago?

In this hour long talk, archaeologist Scott Lomax will discuss a little-known medieval burial ground in Nottingham City

Centre.

In a first for the city a detailed research project, involving a team of experts from Britain, Canada and the USA, has provided new information about life and death in Nottingham during the medieval period. Tests, including DNA analysis, provide some insights into the lifestyles of our ancestors and how some Nottingham folk were treated after death. The talk also provides the opportunity to see the face of a man who lived and died in Nottingham during the early-mid 15th century.

The talk will last approximately 1 hour with question time. The suitability of this talk is at the parents discretion. Images of human skeletons will be briefly shown.

[Book tickets for this talk](#)

[Back to Top](#)



**ROBIN HOOD**  
PAGEANT

**Saturday 10 & Sunday 11 March**  
Nottingham Castle  
Two shows daily  
11:00 & 14:30

[www.whatsonnottingham.com](http://www.whatsonnottingham.com)

*Robin Hood Pageant - Click to find out more and to book tickets*